



DILE

x - l i g h t

Like DILE, the X-LIGHT represents renewal and what it means to be a chair in a working environment.

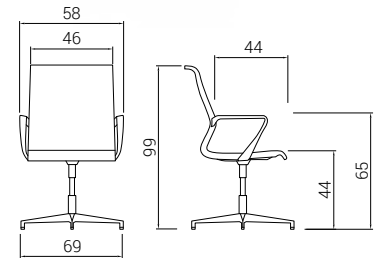
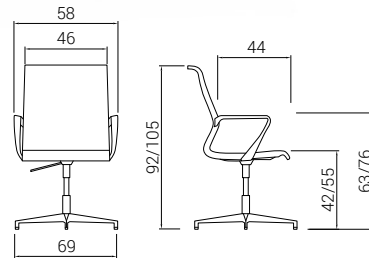
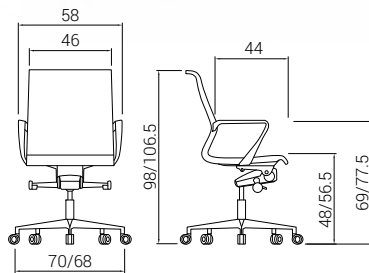
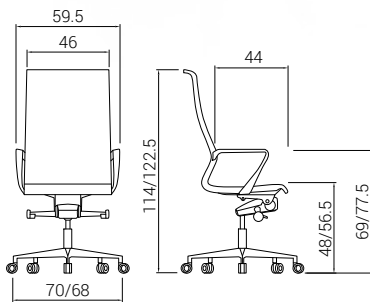
It clearly speaks to the present from the future, bringing innovation from all angles.



x - l i g h t



x - light



x - l i g h t



High chair | S0000-0612-xyyy

Reference	Base	Hollow EMILSIDER Wheels	Arms	Mechanism
S2600	polished aluminum	hollow/rubber	nylon	advanced tilting
S2601	white nylon	hollow/rubber	nylon	advanced tilting
S2602	black nylon	hollow/rubber	nylon	advanced tilting
S2603	polished aluminum	hollow/rubber	nylon	gas lift
S2604	white nylon	hollow/rubber	nylon	gas lift
S2605	black nylon	hollow/rubber	nylon	gas lift

Units 1 / Weight 14,50 Kg / Volume 0,23 m³



Low chair | S0000-0612-xyyy

Reference	Base	Hollow EMILSIDER Wheels	Arms	Mechanism
S2606	polished aluminum	hollow/rubber	nylon	advanced tilting
S2607	white nylon	hollow/rubber	nylon	advanced tilting
S2608	black nylon	hollow/rubber	nylon	advanced tilting
S2609	polished aluminum	hollow/rubber	nylon	gas lift
S2610	white nylon	hollow/rubber	nylon	gas lift
S2611	black nylon	hollow/rubber	nylon	gas lift

Units 1 / Weight 13,50 Kg / Volume 0,23 m³



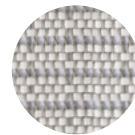
Cantilever | S0000-0612-xyyy

Reference	Base	Gliders	Arms	Mechanism
S2612	4-radius polished aluminum	gliders	nylon	revolving
S2613	4-radius white aluminum	gliders	nylon	revolving
S2614	4-radius black aluminum	gliders	nylon	revolving
S2615	4-radius polished aluminum	gliders	nylon	gas lift
S2616	4-radius white aluminum	gliders	nylon	gas lift
S2617	4-radius black aluminum	gliders	nylon	gas lift

Units 1 / Weight 12,30 Kg / Volume 0,25 m³

Color Frame (xx)	
01	White
02	Black

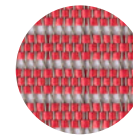
Mesh Color (yy)	
01	White
02	Black
18	Red
22	Gray
27	Sea blue



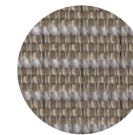
01 / White



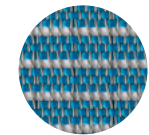
02 / Black



18 / Red



22 / Gray



27 / Sea blue

Reference	Characteristics
A004	Semi-assembled chair delivery
A006	Assembled chair delivery



CERTIFICATES AND REGULATIONS

UNE EN 1335:2001 parts 1, 2 y 3



upholstered·material·finishes

Mesh X-LIGHT



Tech data sheet

Composition

Elastomer Nylon

Resistance to abrasion

+ 100.000 (Martindale cycles)

Breaking strenght

Weft: 147,8 Kg/5cm

Warp: 176,9Kg/5cm

Fastness to Rubbing

EN ISO 105-x12:2003

col. 4165, 1101, 2102, 4154, 4104, 1195

5 - val. max

Coulour fastness to light

EN ISO 4892-2/06

col. 0152, 5154, 1140, 0600, 4202, 0108, 4104, 1100, 2116

8 - val. max

Fatigue strenght

UNE-EN ISO 13934 EN1728:2000 - EN

Level 3° hard > 200.000 cycles / 1.000 N



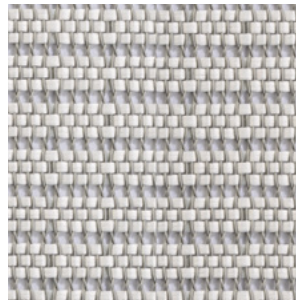
Avoid drying
in the sun



Don't use
bleach



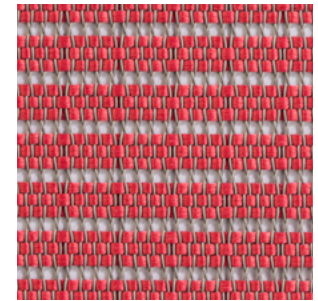
Wash in dry



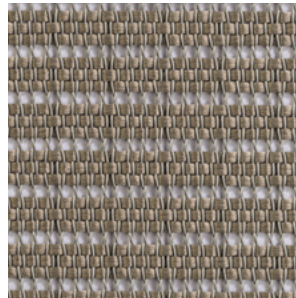
01



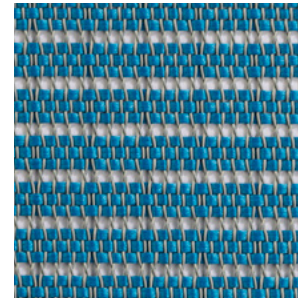
02



18



22



27



dileoffice.com